



Guided Walk To Dick Hudsons Pub

Approx dist; 1.5 miles

Time; 40-50 mins

Difficulty; easy-moderate (can get boggy if wet)



Start You will begin outside the reception, walk up the drive and out the gate turning right and back on yourself up the lane. You will eventually pass a stables on your right and the old Faweather Grange cottage itself.



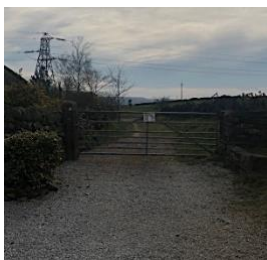
1

You will reach a fork in the lane, turn left and continue to follow the lane until you reach tarmac.



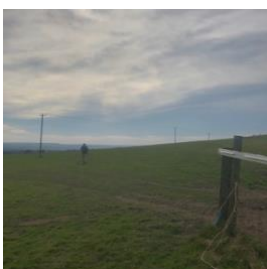
2

Upon reaching the tarmac take the left fork past a group of houses.



3

Head through the gate and across the gallops (lookout for the horses).



4

At this point the path becomes hard to follow, you want to head directly southwest (240°) until you re-cross the gallops.

5



When you cross the gallops still heading straight ahead you should be able to make out a red gate with a stile to the left. Head towards this.

6



Head over the stile and towards a group of young trees. You will see a track going up to the right just before them. Turn up that track walking through a metal gate.

7



Once through the gate you will head up a grassy track, through another gate and along a tarmac track until you reach another stile on the left.

8



Head over the stile cutting diagonally across the field and eventually right as per the above map.

9



You will reach this next stile at which point you want to turn left along the road. (be careful as this road is narrow and can be busy at times).

10



After around 200m you will reach the pub on the left hand side.