

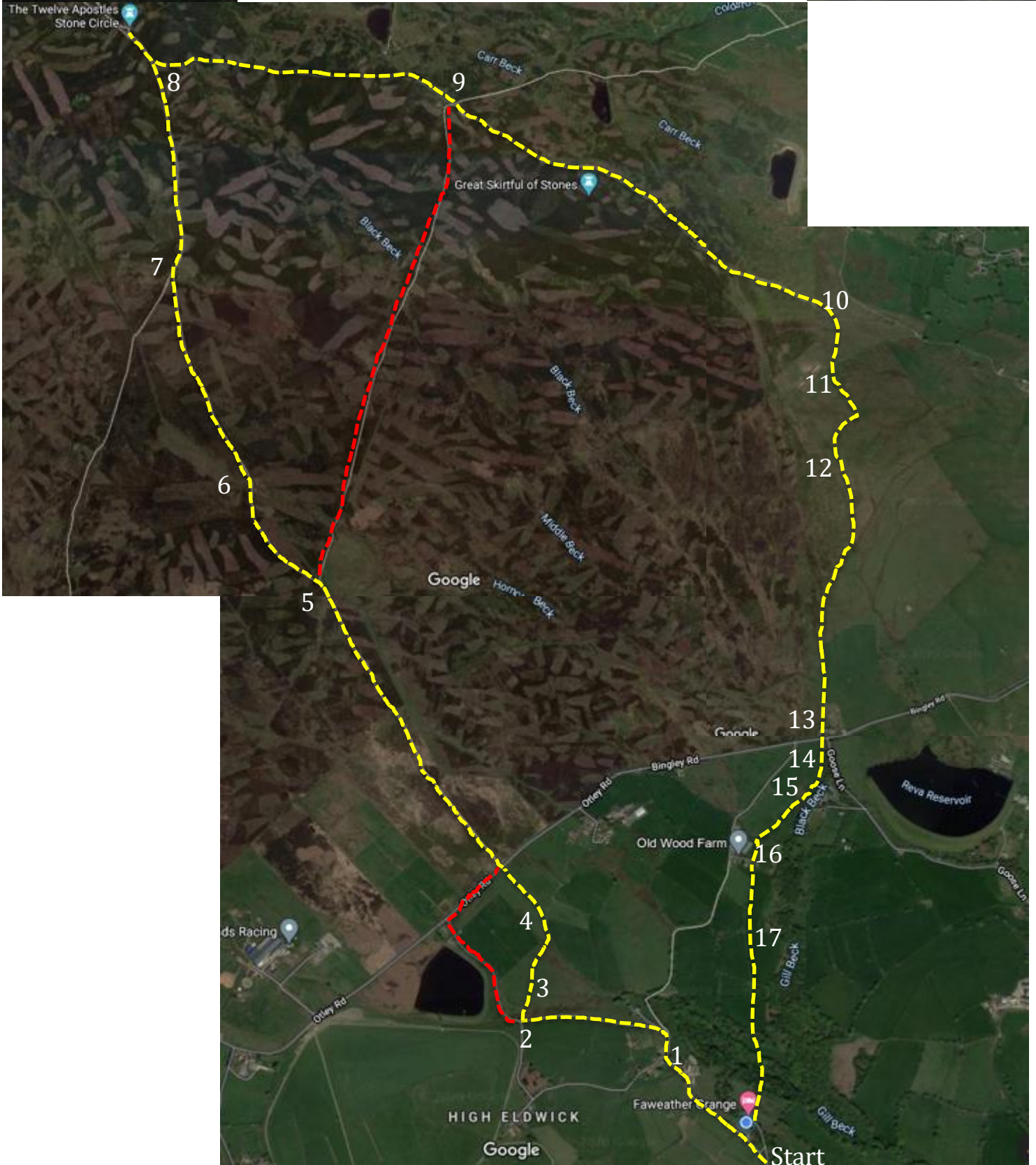
Circular Walk to the 12 Apostles stone circle

Approx. distance; 5.75 miles

Time; 2 hours

Difficulty; moderate (moors can be boggy)

Take a picnic to stop halfway and enjoy the view.
If its wet please note it can get muddy on the moor.
There are no cafés/pubs on the walk.



Start at the top entrance to the park, as you come out of the gate turn sharp right back on yourself and continue up the lane. You will follow the lane around a 90* right and left bend. After the bends keep an eye out for the original 16th Centaury Faweather Grange cottage on the right which used to be used as a stables and rest point along the old pack horse route from Bolton Abbey.



1) 50m after the cottage you will arrive at a fork in the lane. Take this down to the right. At the bottom of the short hill follow the main lane around to the left and continue along until you reach the tarmac at point 2.

2) Just before you reach the tarmac turn right through a stile and across the metal bridge (these fields get boggy so if its wet I'd follow the lane up to the top road (along the red route)).



3) Once you've gone over the stile after the bridge you need to head to the top right hand corner of the field just to the right of the only bush. Take care in this field as it can get boggy (they are passable even when wet)

4) Keep to the right hand side of the field and head straight up towards the road. You will see two metal public footpath signs. When you reach these signs head straight across the road and up onto the moor. If you went along the red route this is where you will re-join the path. Follow the path straight up onto the moor. Keep an eye out for moorhens and sheep on your way.



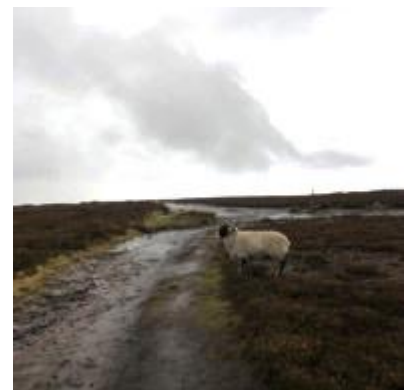
5) Eventually you will reach a stile to your right. If you want a shorter walk and don't wish to go to the 12 apostles stones take this path (depicted in red on the map) and aim for a shed on the moor top you will re-join the route at stage 9. If you're continuing along the route keep heading straight along the path.

6) Continue following the path straight along through the fields of heather. If you're up here in August you will be blessed with blooms of purple flowers.



7) When you reach the fork in the path take it to the right following it along until you reach another fork

8) At this fork take a left and the stone circle is approximately 100m up here on the right hand side. For more info on the stones please visit: <http://yorkshiresbestguides.co.uk/prehistory-on-ilkley-moor-the-twelve-apostles/> Once you've viewed the stones come back down on yourself and take the other track to the track you came up on.



9) This is about half way around the walk and is an ideal spot for a picnic or just a stop to take in the views. From these rocks you can see into the Wharfe valley down to the city of both Leeds and Bradford. This is also where you will re-join us if you left us at point 5. From here continue to follow the dirt road for around 1km.

10) When you reach the power lines just before you go underneath them please head along the path to the right and through a small gate. Continue along the path until you reach a rifle range in a gravel car park.



11) Continue down the track to the left you will walk around a 90° bend to the right and then a 90° bend to the left. After a short while you will reach another gate.

12) Head straight through the gate and follow the path down to the right keeping the wall on your left. You will eventually get to the bottom of the moor by a road which you are going to head straight across



13) Head through the metal gate and stile and across the road to the right where you will climb over a further 2 gates and stiles.



14) Head down the field keeping the wall to your left. If you wish to avoid the bog in the middle I'd advise walking around it to the far right hand side.



15) Climb over the stile and head diagonally across the field to the cowsheds where you will cross a little stream.



16) Head around to the right keeping the sheds on your right walk in-between a pile of rubble and a caravan where you will see a white painted stile.



17) Continue down the field keeping the wall to your right. Keep an eye out across the valley as the lodge park comes into sight nestled in the hills. At the bottom of the hill head diagonally across the field to pick up a path down into the woods. Go across the stream and make your way back up onto the lodge park where your hot tub awaits you.